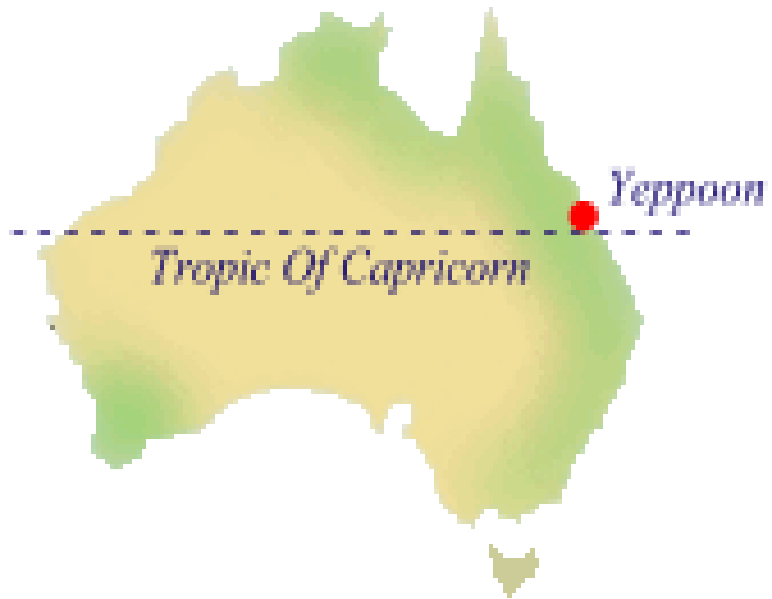


# PASTORAL PLAN

2008 - 2013

## CAPRICORN COAST CATHOLIC PARISH



*Foreword*

*It is with great pleasure that we, the Parish Pastoral Council, present this 5 year Pastoral Plan on behalf of our parish. Considerable discussion and prayerful discernment and consultation has taken place to ensure that the Pastoral Plan truly reflects the views of as many parishioners as possible.*

*The Plan was formally adopted at the Parish Pastoral Council meeting on 2<sup>nd</sup> August 2008.*

*We entrust this plan to future Parish Pastoral Councils for continual monitoring and review so as to reflect the changing circumstances of our parish and the discernment of the movement of the Holy Spirit within our parish.*

HANIFIN, Fr. Bryan	Parish Priest
LOCH, Mary	Chairperson
BOWMAN, Collette	Secretary
BEVIS, Mary	Member
BROWN, Janet	Member
CHAPMAN, Maureen	Member
DONALDSON, Greg	Member
HOSE, Jude	Member
MCAULIFFE-HARRIS, Margaret	Member
MCGUIRE, Debbie	Member
PICKETT, Joseph	Member
SCHICK, Mary	Member

TABLE OF CONTENTS

**INTRODUCTION ..... 3**  
 Mission Statement..... 3  
 Vision Statement ..... 3

**DESCRIPTION OF THE PARISH ..... 4**  
 History ..... 4  
 Parish Boundaries ..... 5  
 Current Demographics ..... 5  
 Schools..... 7  
 Religious Orders..... 7

**RESOURCES ..... 8**  
 Finances ..... 8  
 People ..... 10  
 Property ..... 10  
 Staff and Structure ..... 11

**SIGNIFICANT DEVELOPMENTS OVER LAST 3 YEARS ..... 12**

**FUTURE DIRECTIONS AND GOALS ..... 13**

**COMMUNICATIONS ACROSS THE PARISH ..... 14**

**CONCLUSION..... 14**

Tables/Pictures/Figures

Page 4	Picture 1	Sacred Heart Church
Page 4	Picture 2	Mary Immaculate Church
Page 5	Picture 3	Map of Parish Boundaries
Page 7	Figure 1	Census Comparison to National Average
Page 7	Figure 2	Parish By Religion
Page 9	Table 1	Parish Collections
Page 10	Figure 3	Planned Giving Plus Loose Collections
Page 11	Table 2	Areas of Parishioner Involvement
Page 11	Table 3	Parishioner Participation Levels
Page 12	Figure 4	Staff & Parish Structure

## INTRODUCTION

### **Mission Statement**

The mission of the Parish is found in the mission of the Church, which have been stated<sup>1</sup> as

- **Proclaiming** the good news of God's love throughout the world;
- **Inviting** more and more people into the community of disciples;
- **Sanctifying** by encouraging the whole community of faith to grow in holiness;
- **Transforming** the world until justice, love and peace prevail

As a Parish we believe the success of the mission will be evident when we see people –

- *being 'attracted';*
- *reaching out hospitably to each other;*
- *showing a spirit of inclusion;*
- *and having an active outward focus*

### **Vision Statement**

***Capricorn Coast Parish will be a community of believers, where all who come will find God's love in action, in us and through us and have their own personal experience with the Risen Christ.***

This vision is based upon the following:

*In a personal and communal way:*

*we discern, accept, and live out joyfully the call that God has called us too, and equipped us for, through charisms and talents, as an entire way of life.*

*we strive to be conscientious and faithful Christian Stewards, developing an ever deepening personal relationship with the Lord Jesus, based on an active life of prayer, scripture and the sacraments, especially the Eucharist.*

*we strive to come together in unity to witness and spread the gospel in faith, hope and charity to each other and the whole world;*

*we value the openness, inclusiveness, good humor, hospitality, encouragement, affirmation, forgiveness and family friendliness of our community*

*we are committed to the genuine care, support and healing for those in need.*

*we share leadership based on service and integrity, striving for quality teaching and learning*

*we strive to cherish the gifts of all, while using one's own gifts to serve*

---

<sup>1</sup> Handbook for Parish Pastoral Council 3<sup>rd</sup> Edition. Cecilia Anning, Page 7

## DESCRIPTION OF THE PARISH

### ***History***

The Capricorn Coast Catholic Parish was formed in 1928 from an amalgamation of Sacred Heart Parish (Yeppoon) and Mary Immaculate Parish (Emu Park) and incorporating the areas of Cawarral, Mount Chalmers, and Tanby.

### **Sacred Heart Church**



Picture 1. Sacred Heart Church

The first Mass was held at the old mining site at Taranganba. Masses were then held at the old School of Arts Building until the Parish built a church at St Ursula's. In 1928 a new church (to seat 380 people) was located on the John Street Site. After the cyclone of 1976 damaged this one, it was replaced in 1978 with a new church to seat 400 people. The current church on Tabor Drive was officially opened and blessed by our Bishop, Father Brian Heenan on Sunday 6th August 1995.

### **Mary Immaculate Church**

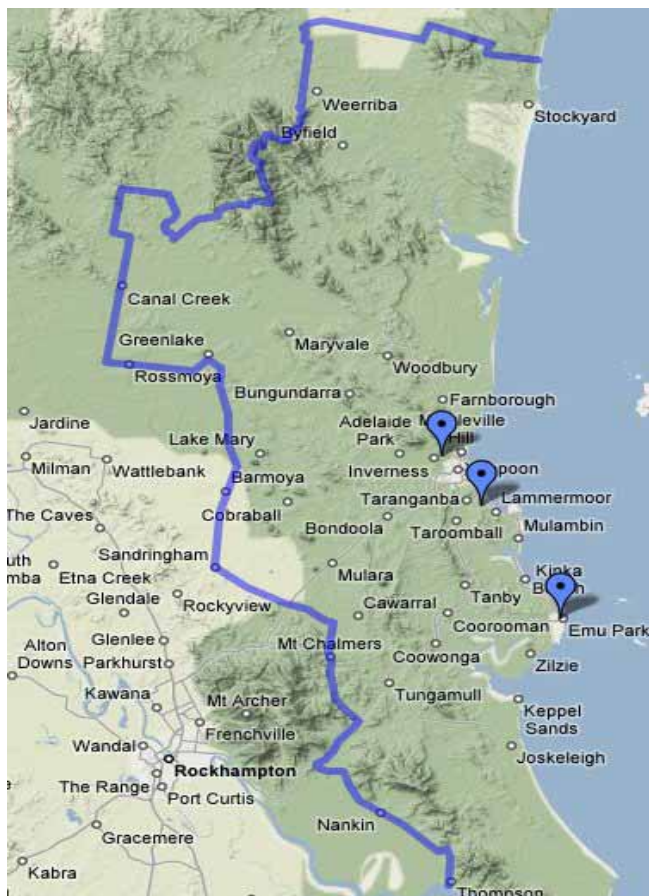
The Church was given the name 'Mary Immaculate' and was blessed and opened on September 25th, 1904 by Right Rev. Bishop Doyle of Lismore N.S.W. By 1923 the population of Emu Park was growing rapidly and Masses at the Church were becoming over-crowded, particularly during holiday periods. This necessitated the enlargement of the Church by the addition of two wings on the Church as well as a new sacristy. In 1974 after the original Church was declared unsafe, St. Agnes School which stood next door to the original Church was converted into a church. By 1984 the population had again outgrown this converted school building. Consequently the existing Mary Immaculate Church was blessed and opened on Dec 8th 1984 by Bishop Ray Benjamin former parish priest and then Bishop of Townsville.



Picture 2. Mary Immaculate Church

The full history of each church can be found on website:  
<http://www.yeppoon.com/catholic/index.html>

**Parish Boundaries**



As a parish we acknowledge the Darumbal People as the traditional custodians of this land.

The place markers indicate the worship centres of **Sacred Heart Church**, Tabor Drive, Lammermoor Beach and **Mary Immaculate Church**, Archer Street Emu Park and **St Brendan’s College Chapel** where mass is held every Sunday in term time at 5.30pm

The parish is part of the Rockhampton Deanery and there are ongoing discussions of ‘clustering’ with parishes in North Rockhampton.

Picture 3. Map of Parish Boundaries

**Current Demographics**

Total Population	23,069
Catholic	6,044
No Religion	4,279
Indigenous	732

This 2006 Census Data has been sourced from ABS website following manual comparison of parish map against census districts maps. The figures presented are based on “Usual place of Residence”.

The “No Religion” figures have been included in recognition of Diocesan Year of Evangelization and The “Indigenous” figures have been included in recognition of the “Make Indigenous Poverty History” campaign.

This information is presented graphically below with a comparison to the national averages:

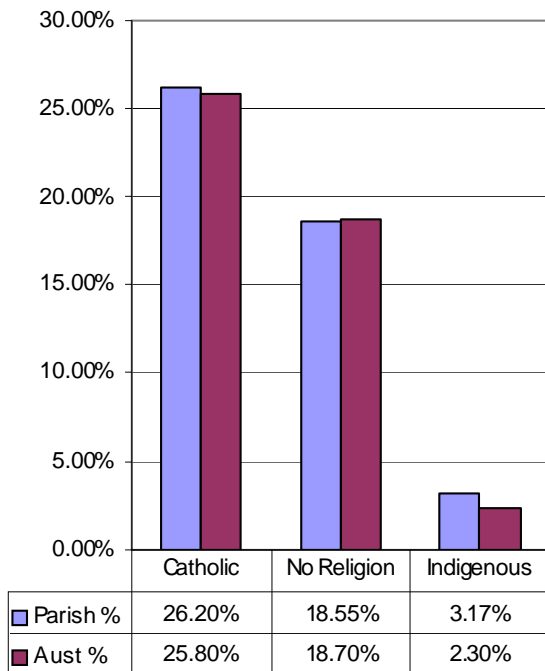


Figure 1. Comparison to National Average

The latest headcount at parish liturgies revealed approximately 1800 attendances, which is 29.8% of people who identify themselves with the Catholic faith, or 7.8% of total population. This means that the total population within the parish can be presented as follows:

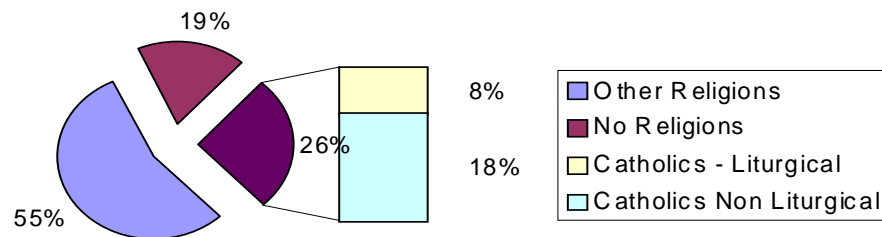


Figure 2. Parish by Religion

### **Schools**

School	Approx Enrolment	
Sacred Heart Primary School	570	Diocesan Catholic Education Office
St Ursula's Secondary Boarding College	490	St Ursula's College Ltd,
St Brendan's College	560	Edmund Rice Education Australia
St Benedict's College - Opening 2009	N/A	Diocesan Catholic Education Office

In addition to the above Catholic Schools there are an estimated 295 children receiving religious instruction in the Catholic faith at the state primary schools (Taranganba State School, Yeppoon State School, and Farnborough State School) and approximately a further 60 at Yeppoon State High School.

There are no estimates available for Emu Park State School (ecumenical instruction), Cawarral State School, Coowonga State School, Keppel Sands State School or Byfield State School.

### **Religious Orders**

The Parish is fortunate to have representatives from the following orders living in and contributing to the life of the parish

- Rockhampton Congregation of the Sisters of Mercy
- Congregation of the Sisters of St Joseph
- Congregation of the Sisters of the Presentation of the Blessed Virgin Mary
- Sisters of Benedictine Monastery of the Transfiguration
- Christian Brothers

## RESOURCES

### Finances

**Capricorn Coast Catholic Parish  
Financial Statement  
for the Year Ended 30th June 2007**

**Bank Account Balance as at 1st July 2006**                      \$ 11,787

#### Income

Envelopes	138,886
Loose Collection	34,714
Fund Raising & Gifts	23,766
Collections & Stole Fees	14,556
Other	20,010

**Total Income**    \$ 231,932

#### Expenditure

General Parish Expenses	61,334
Office Expenses	26,517
Property Expenses	45,480
Diocesan Charges	25,319
Loan Repayments	48,036
Other	5,451

**Total Expenditure**    \$ 212,137

**Bank Account Balance as at 30th June 2007**                      \$ 31,582

### Planned Giving Program

The annual collection figure for the last 10 years is shown below

	Total	Plan	Loose
	Giving	Collection	
1997/98	114,814.00	90,224.00	24,590.00
1998/99	134,770.00	112,165.00	22,605.00
1999/00	132,527.00	112,141.00	20,386.00
2000/01	128,285.00	107,634.00	20,651.00
2001/02	137,672.00	114,071.00	23,601.00
2002/03	127,670.00	101,414.00	26,256.00
2003/04	147,743.00	120,070.00	27,673.00
2004/05	144,189.00	116,876.00	27,313.00
2005/06	173,299.00	138,193.00	35,106.00
2006/07	173,600.00	138,886.00	34,714.00

Table 1. Parish Collections

The planned giving program encompasses approximately 120 weekly benefactors and is renewed currently every two years. The purple bar in the graph below is when the planned giving program has been renewed.

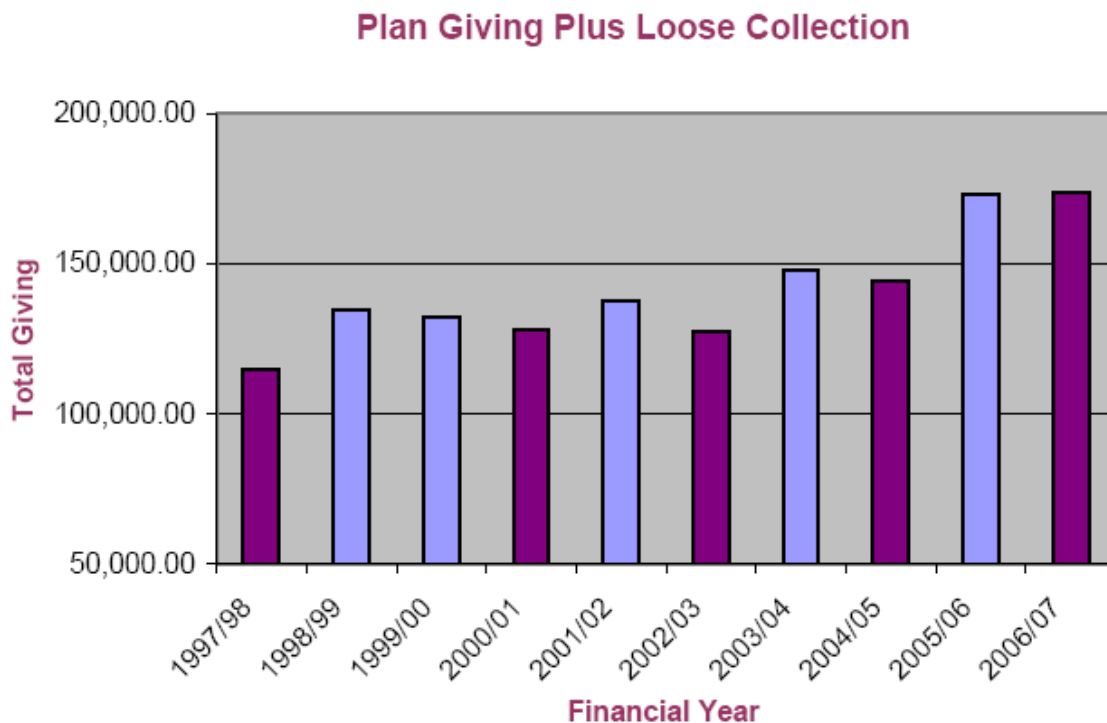


Figure 3. Planned Giving Plus Loose Collections

The Parish Pastoral Council and Parish Finance Committee have agreed to the following priorities for the financial resources of the parish:

1. *Meet the financial obligations of the parish*
2. *Conduct fund raising / planned giving*
3. *Advise the PP on financial matters*
4. *Meet legal obligations (insurance / GST / Audit)*
5. *Support the Diocesan Development Fund*
6. *Operate within our financial delegations (how much we can spend without needing Bishop / Diocesan approval)"*
7. *To ensure adequate liturgical, community/meeting, office and storage spaces are available for parish needs and to provide for their ongoing maintenance.*
8. *To support the Parish Groups in their activities and especially in the area of formation and training*
9. *To meet the costs of promotion of a 'stewardship' spirituality within the parish*

**People**

**Participation**

A recent review of participation in Liturgical Ministries and Parish Groups gives an indicative picture as at April 2008. There are 51 Liturgical Ministry Groups and other Parish Groups that are active in the parish.

Table 1 reflects the actual numbers involved in each of the categories of parish groups and allows for a person to be involved in more than one group.

One of the desired outcomes of 2<sup>nd</sup> Vatican Council was for greater lay participation in liturgical celebrations and these figures show that approx 20% of those attending liturgies are actively involved in the liturgy.

Type of Group	People	Percentage
Apostolic	69	11%
Canonical	35	6%
Liturgical	372	59%
Prayer/Study	92	15%
Pastoral	60	10%

Table 2. Areas of Parishioner Involvement

Number of People Involved in	Totals
1 Group	95
2 Groups	53
3 Groups	25
4 Groups	24
5 Groups	15
6 Groups	7
7 Groups	4
8 Groups	6
9 Groups	2
10 or more Groups	2

Table 3. Participation Levels

Table 2 attempts to eliminate double counting (i.e. of people being in more than one group) and shows an overall level of participation of approximately 233 parishioners.

As the Diocese and the parish move more into the areas of evangelization and embracing the spirituality of 'stewardship', the figures from these tables will provide a base with which to measure progress in the 'outward focus' of these areas.

**Giftedness**

It is expected that as part of the promotion of the stewardship spirituality within the parish that a 'giftedness inventory' will supplement the parish census and the 'nominations for ministry' (asking people to participate in parish groups). This 'inventory' will assist parishioners to recognize, celebrate and utilize their giftedness in new personal, creative and unique ways.

**Property**

Property within the parish boundaries is under the ownership and control of the Diocese. However the Parish Finance Committee assists the Parish Priest in administering and funding all the outgoings on the two worship centres of Sacred Heart church and Mary Immaculate Church

**Staff and Structure**

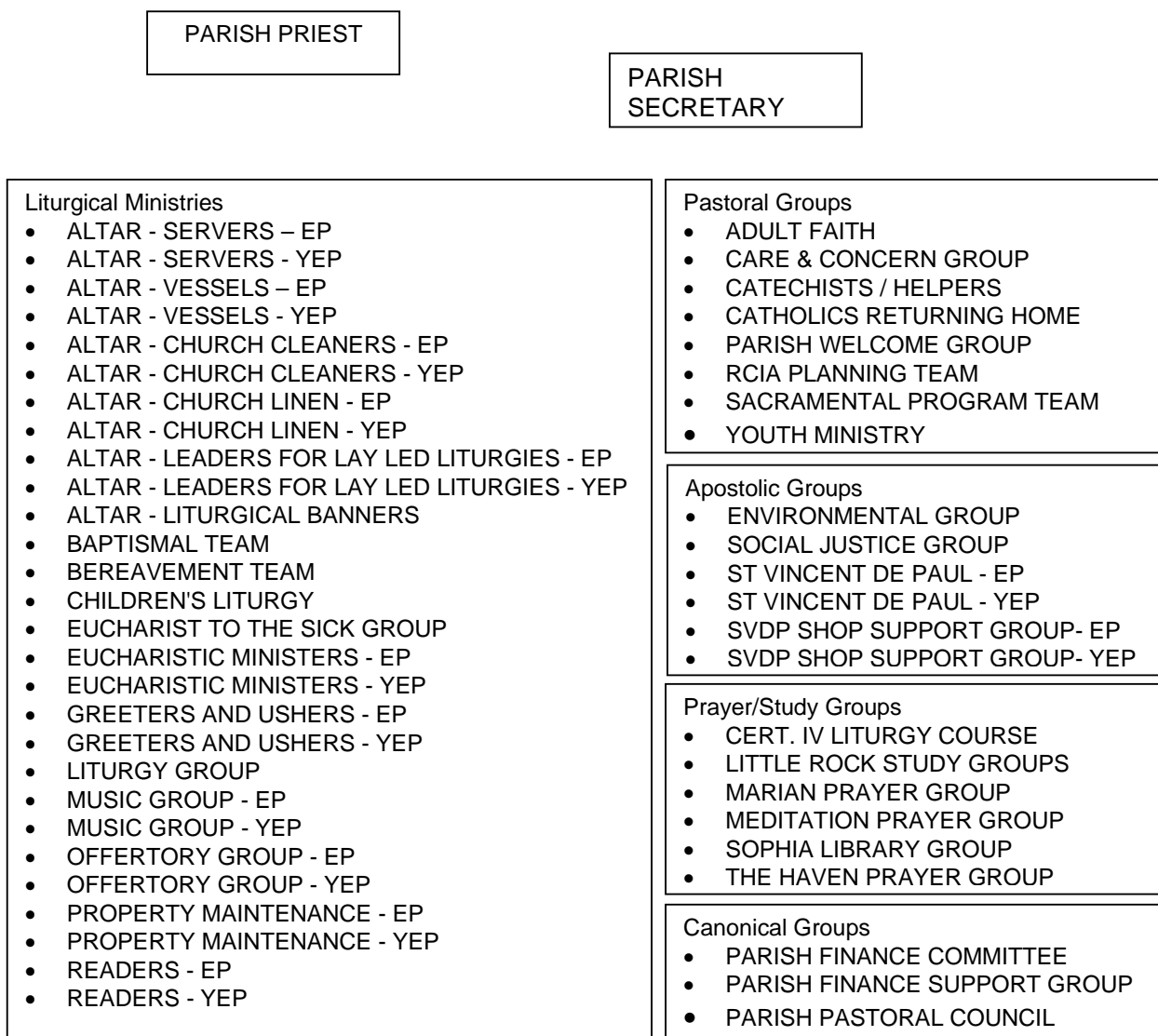


Figure 4. Staff & Parish Structure

Please note. A new liturgical ministry group for “Welcomer/Commentator” has just commenced made up of volunteers from the Readers Groups.

## SIGNIFICANT DEVELOPMENTS OVER LAST 3 YEARS

### **2004 Centenary Celebrations**

Mary Immaculate Church celebrated its centenary with the unveiling of a plaque by Bishop Brian Heenan.

### **2005 Parish Assembly**

The outcomes of the Parish Assembly have been the focus of the Pastoral Council. The establishment of a Welcoming Group and a Social Justice Awareness Group as well as ongoing support for existing groups have been the highlights.

### **2005/06/07 Little Rock**

Parishioner involvement in Scripture Study groups has continued to grow.

### **2005/06/07 Liturgical Ministry Course**

A total of 8 people have continued to study the Certificate Course subsidized by the Diocese.

### **2006 Sophia Library**

The Benedictine Monastery in conjunction with the parish established a library of religious writings.

### **2006/07 New School**

DCEO announced a new school would open in 2009 and following parish consultation it was named St Benedict's.

### **2006/07 Good Friday Ecumenical Walk of Faith (Emu Park)**

A public demonstration of faith, retracing the way of cross through Emu Park. This joint endeavour with people from other Christian faiths traditions attempts to draw all Christians together to bring the real meaning of Easter to the wider community.

### **2007 Journey Cross & Icon**

The 2008 World Youth Day Cross and Icon visited both worshiping centers in the parish. Pictorial record is available on website.

### **2007 Buildings**

Demolition of Emu Park Hall due to asbestos and for creation of car parking space as well as erection of replacement storage shed(s).

### **2007 Year of Evangelization**

Encouraging participation in Diocesan Prayer and formation. The initiating of Catholics Returning Home program was one outcome.

### **2007 Website**

The Parish website is <http://www.yeppoon.com/catholic/index.html>

### **2007 Parish Feast**

A social function to welcome new parishioners and to provide an opportunity for existing parishioners to experience fellowship.

### **2007 Parish Christmas Ham Wheel**

Primarily an opportunity for a gathering of parishioners in a social context with some fundraising.

## **FUTURE DIRECTIONS AND GOALS**

At the 5<sup>th</sup> April meeting the Pastoral Council adopted the “Goals and Future Directions” as shown on page 2 of this document for a term of 5 years(i.e. 2008-2013). These were developed from the 2005-06 Goals & Strategies; 2006 Review of Parish Assembly Outcomes; 2007 Stewardship Workshop; Diocesan Initiatives(e.g. Evangelization and Stewardship) and Fr Bryan’s 5 year vision for the parish(Stewardship and closer ties to parish schools).

It also adopted that rather than the detailed strategies, times frames and desired outcomes, that would normally be included in the Pastoral Plan, there would instead be an annual workshop of Pastoral Councilors and leaders of parish groups (and other interested parishioners) to develop annual action plans. This annual workshop would also provide the opportunity for leadership training and formation

### **Building Up the Parish Community**

**Goal** To be, both socially and spiritually - inviting, welcoming, inclusive, uniting and participative – recognizing that this goal must be applied to the assembly at Sunday Eucharist, to the members of our catholic school communities and to the wider community in our local area.

### **Building Up Groups within the Parish**

**Goal** To foster the establishment and growth of small parish groups (Small Christian Communities) within the parish that provide an environment for the deepening and living out of our faith through continued education, service, love and outreach.

### **Building Up Personal Spirituality**

**Goal** To encourage a deep, personal relationship with Jesus through prayer, scripture and the sacraments. To help each person, through the spirituality of Stewardship, to recognize, celebrate and use his or her giftedness to bring forth the Kingdom.

### **Outward Focus**

**Goal** To witness, through faith and love in action, to the Good News of the Kingdom of God.

## COMMUNICATIONS ACROSS THE PARISH

Keeping parishioners informed and as involved as possible is recognized as a key element in the success of this Pastoral Plan.

### Past efforts included:

- Parish Pastoral Councilors talking at masses giving updates on what's happening in the Parish
- Static Displays in Church Foyers
- A Parish Directory of Parish Group Contact Numbers is published periodically.
- A Parish Census is conducted as part of Planned Giving program by Finance Committee.
- Major liturgical season homilies are made available from the website.

### Current efforts include:

- Concise version of Pastoral Council minutes published in Church Bulletins
- Regular feedback by Finance Committee at Masses
- Speaking at masses on specific issues (eg naming of St Benedict's)

### Future areas to be explored include:

- Redesigning Parish Newsletter
- Further development and promotion of our website, especially by Parish Groups
- Exploring the practicality of Focus Groups
- Downward deployment through parish groups of the proposed annual action plans

## CONCLUSION

We pray for a fresh outpouring of the Holy Spirit upon our parish and our Diocese, so that we may grow in love of our God and each other; that we may be attentive to the movement of the Holy Spirit within our parish and follow the path that He has called each of us to follow.